

The logo for Bournemouth University, featuring the letters 'BU' in a large, white, stylized font with a double outline.

**Bournemouth  
University**



**Please Note:**

The accommodation prices quoted in this presentation are for the 2024/25 academic year. For the latest information, please refer to the BU website.

**Your home from home.**

**Accommodation for first year undergraduate students**

**#BUOpenDay  
#BelongAtBU**

# It's going to be great...

- A wide variety of accommodation options, both on and off-campus and in halls of residence or BU managed housing
- Good transport links to the university campuses from all sites
- Cycle storage
- Internet connection
- Laundry facilities



- Exclusive for those living in the BU accommodation portfolio
- Works around three core principles: **Social**, **Wellbeing** and **Skills**





# Bournemouth and the surrounding area





Bournemouth  
University

# Bournemouth & Poole



# Lansdowne Campus

**15 mins**

Talbot Campus by bus or bike

**10 mins**

Town centre

The beach

Bournemouth Gardens

**5 mins**

Bournemouth Rail/Bus station

Supermarkets and grocers

Between all halls blocks

The Old Fire Station

- Bailey Point
- Chesil House
- Cranborne House
- Dorchester House
- Lansdowne Point
- Lulworth Accommodation
- Lyme Regis House
- Purbeck House



# Bailey Point – Guarantor required

£250 deposit

**£192.66 pw** - 42 weeks (standard flat)

**£225.08 pw** - 50 weeks (standard studio)

**£236.64 pw** - 50 weeks (prem. studio)

550 students at this accommodation

5-8 bed flats

En-suite in all rooms

Small double bed

Common room

Gym





# Chesil House – Guarantor required

£250 deposit & two weeks' rent in advance against the third rental instalment

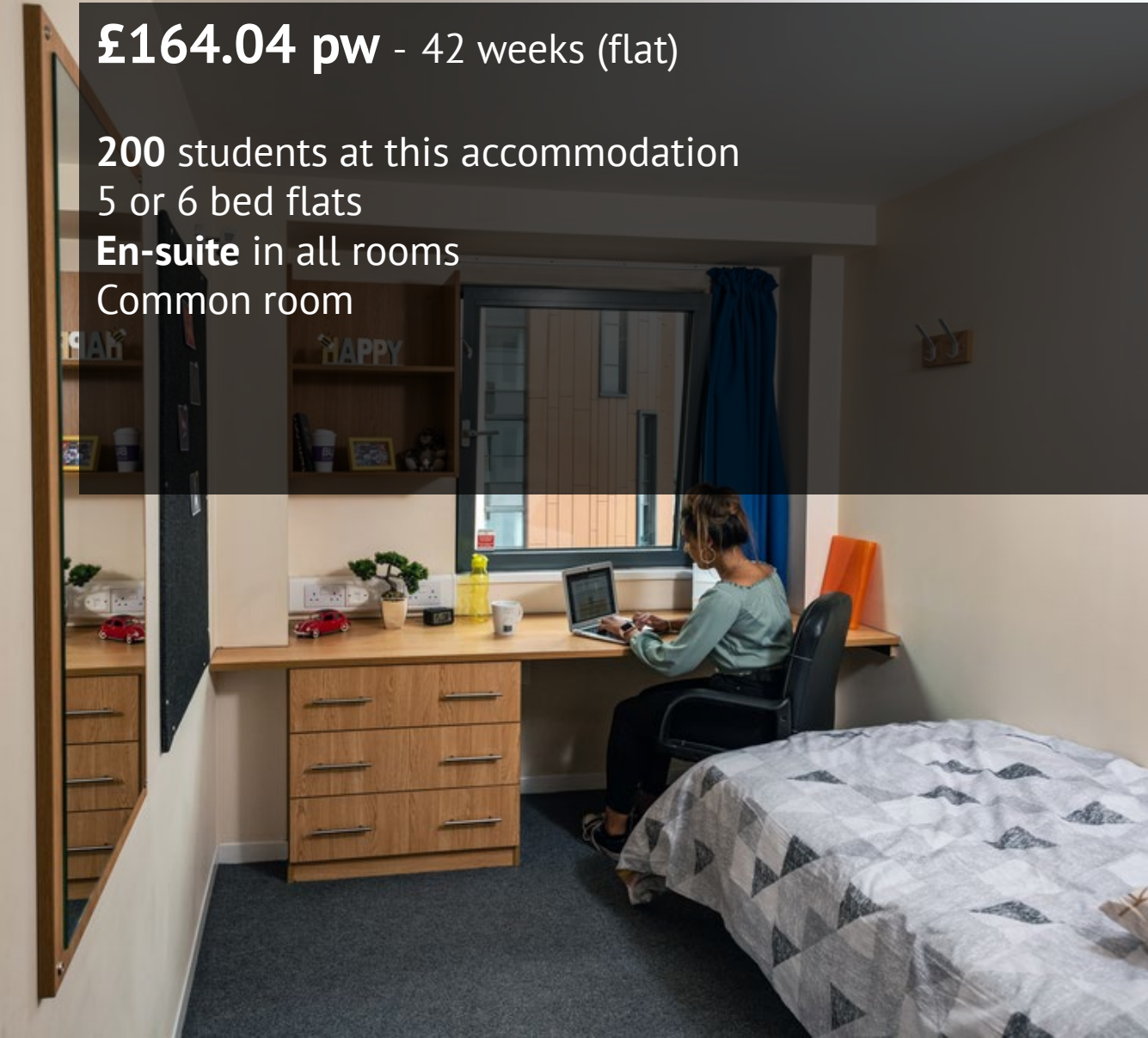
**£164.04 pw** - 42 weeks (flat)

200 students at this accommodation

5 or 6 bed flats

**En-suite** in all rooms

Common room



# Cranborne House – Guarantor required

£250 deposit & two weeks' rent in advance against the third rental instalment

**£151.71 - £170.77 pw** - 42 weeks (flat)

**£150.59 - £169.65 pw** - 50 weeks\* (flat)

**£179.24 pw** - 50 weeks (studio)

500 students at this accommodation

6 or 7 bed flats

**En-suite** in all rooms

Common room

\*NHS courses



# Dorchester House

£250 rent instalment 1

£177.83 - £188.06 pw - 42 weeks (flat)

£212.73 - £221.83 pw - 50 weeks (studio)

590 students at this accommodation

3-7 bed flats

En-suite in all rooms

Small double beds in all rooms

Common room

Gym



# Lansdowne Point

£250 rent in advance

**£197.95 pw** - 42 weeks (classic en-suite)

**£202.95 pw** - 42 weeks (deluxe en-suite)

**£227.95** - 42 weeks (studio)

**£226.65** - 50 weeks (studio)

257 students at this accommodation

5-6 bed flats

**En-suite** in all rooms



# Lulworth House – Guarantor required

£150 holding fee, plus four weeks' rent due by the end of August, minus the holding fee

**£173.77 pw** - 42 weeks (standard flat)

**£183.77 pw** - 42 weeks (sea view flat)

**£193.77 pw** - 42 weeks (gold sea view flat)

124 rooms

En-suite in all rooms

Communal spaces include gym, café, outdoor chill out area,  
outdoor football and basketball court



# Lyme Regis House – Guarantor required

£250 deposit & two weeks' rent in advance against the third rental instalment

£173.83 pw - 42 weeks (flat)

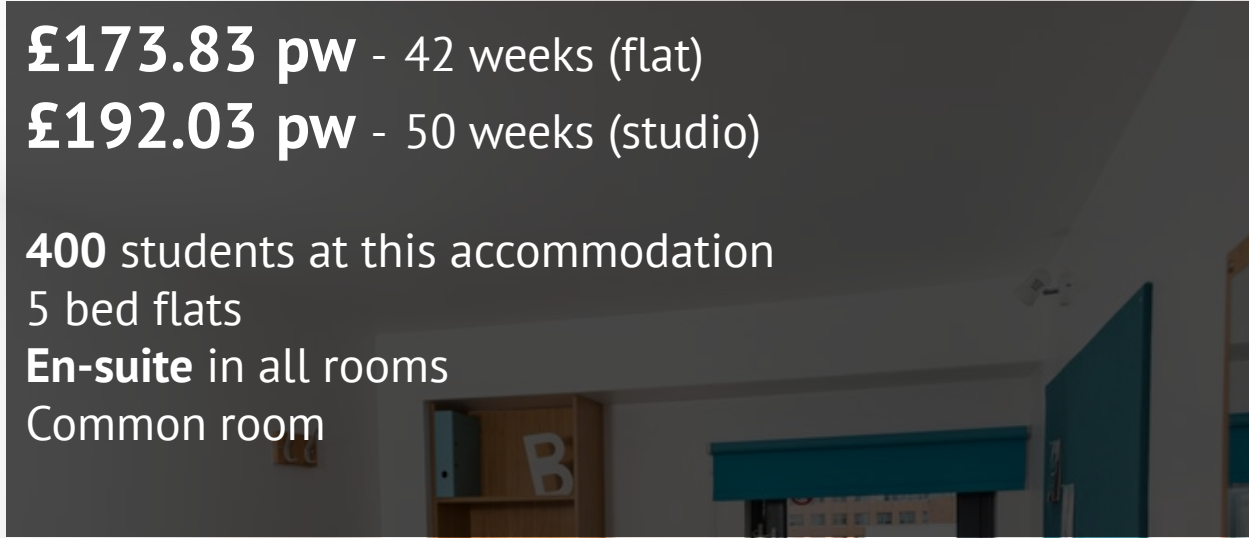
£192.03 pw - 50 weeks (studio)

400 students at this accommodation

5 bed flats

En-suite in all rooms

Common room



# Purbeck House – Guarantor required

£250 deposit, plus two weeks' rent in advance against the third instalment payment

**£165.59 pw** - 42 weeks (flat)

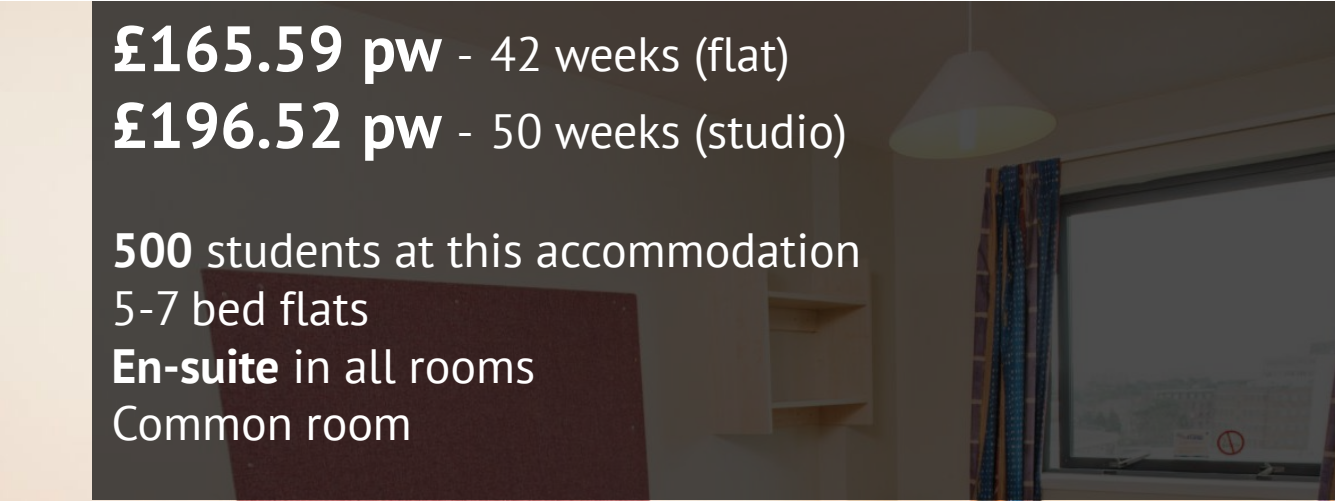
**£196.52 pw** - 50 weeks (studio)

500 students at this accommodation

5-7 bed flats

**En-suite** in all rooms

Common room



**30 mins**

Talbot Campus by bus

**5 mins**

from the Town Centre  
Poole Train Station  
Poole Quay  
Shopping Centre  
Supermarkets

▪ **Corfe House**





# Corfe House – Guarantor required

£250 deposit plus 5% annual rent due by 1 August

**£163.29 - £172.76 pw** - 42 weeks (flat)

**£171.64 pw** - 50 weeks (flat) (NHS courses)

308 students at this accommodation

5 or 6 bed flats

**En-suite** in all rooms

Common room



**15 mins**

Lansdowne Campus by  
bus or bike

**20 mins**

from the Town Centre  
Local supermarkets

**2 mins**

Lecture theatres & seminar  
rooms

Open Access Centre

On-campus facilities

## ▪ Student Village



# Student Village

£250 rent instalment 1

£143.49 - £157.98 pw - 40 weeks (room)

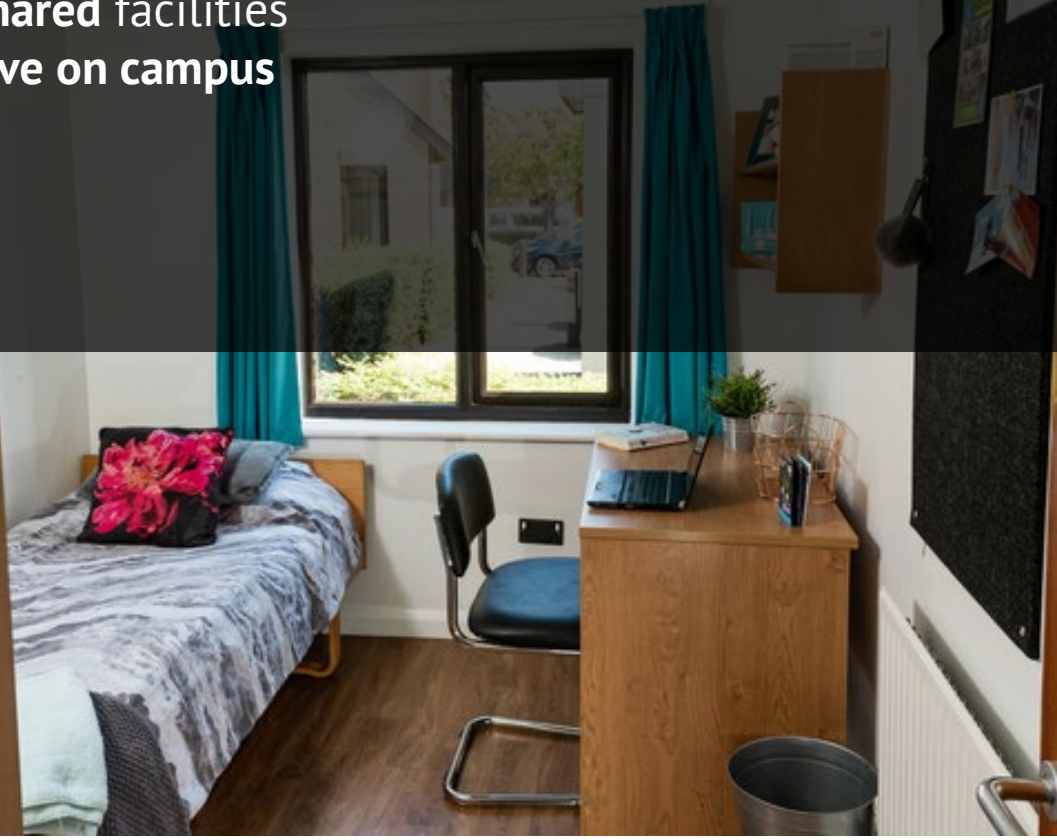
£143.13 - £157.62 pw - 42 weeks (room) (Paramedic Science)

278 students at this accommodation

3-7 bed houses

Shared facilities

Live on campus



# Unilet shared houses

£250 rent instalment 1

£141.48 - £153.49 pw - 41 weeks (room)

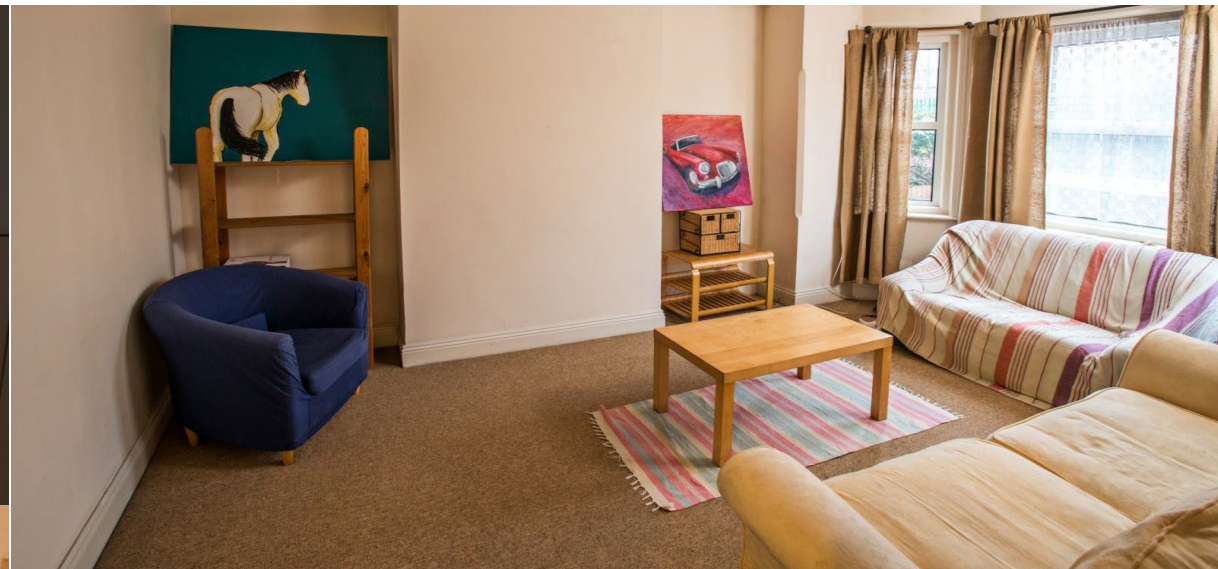
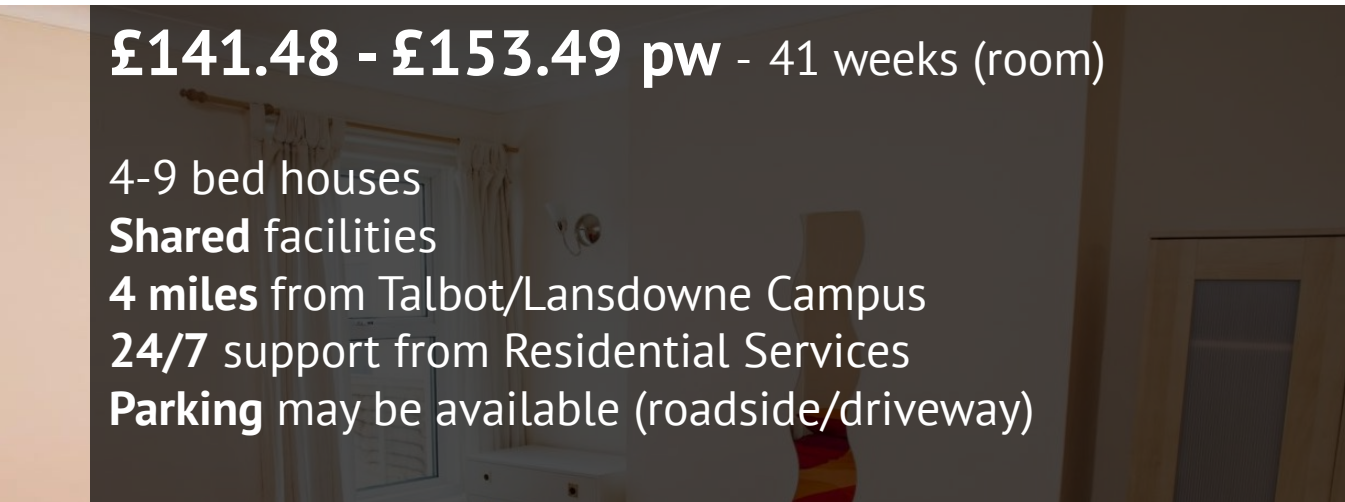
4-9 bed houses

**Shared** facilities

4 miles from Talbot/Lansdowne Campus

24/7 support from Residential Services

**Parking** may be available (roadside/driveway)



# Booking accommodation

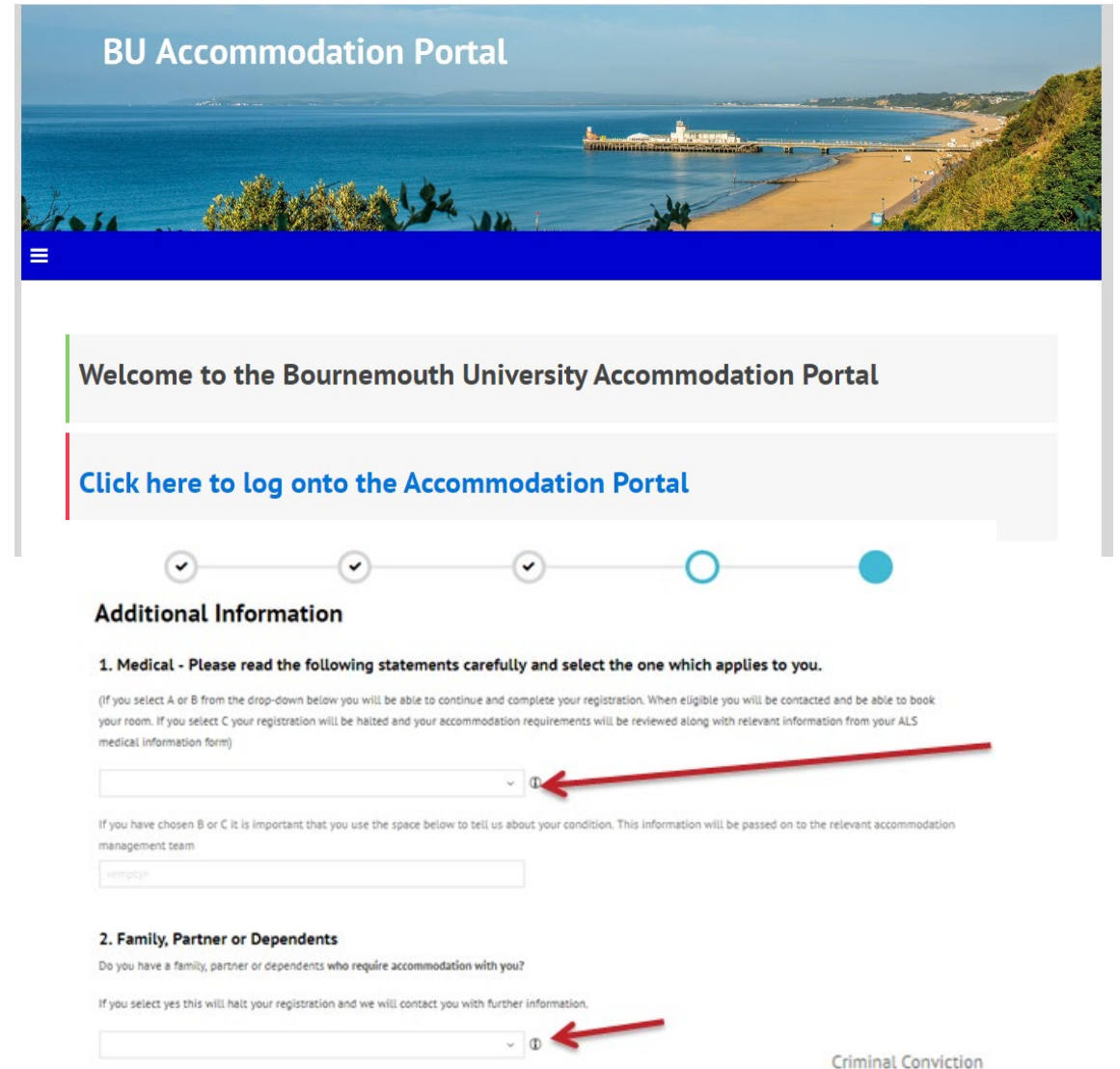
- Book accommodation through the BU Accommodation Portal
- Go to the BU website for more details:  
[www.bournemouth.ac.uk/accommodation](http://www.bournemouth.ac.uk/accommodation)
- Accommodation guarantee\*

\*To be confirmed for 2025 entry



# Stage 1 - Registering your interest in Accommodation

Once you have made BU your Firm choice, we will email you information about Stage 1 (Registering your interest in accommodation)



**BU Accommodation Portal**

Welcome to the Bournemouth University Accommodation Portal

[Click here to log onto the Accommodation Portal](#)

Progress indicator: 4 steps, with the 4th step (Additional Information) highlighted in blue.

### Additional Information

**1. Medical - Please read the following statements carefully and select the one which applies to you.**

(If you select A or B from the drop-down below you will be able to continue and complete your registration. When eligible you will be contacted and be able to book your room. If you select C your registration will be halted and your accommodation requirements will be reviewed along with relevant information from your ALS medical information form)

If you have chosen B or C it is important that you use the space below to tell us about your condition. This information will be passed on to the relevant accommodation management team

**2. Family, Partner or Dependents**

Do you have a family, partner or dependents who require accommodation with you?

If you select yes this will halt your registration and we will contact you with further information.

**Criminal Conviction**

# Stage 2 – Booking your accommodation

- Use these filters to narrow searches, you will only see rooms available

If you want Single Sex it is in the Attributes filter

- Click to see others who have already booked



## Welcome to the Room Selection Page

Please use the filters below to look for available rooms in all of our accommodation.

Please note that the vast majority of our flats are mixed gender and the rooms have been labelled, therefore you will only see rooms available to your gender.

If you want Single Sex accommodation then you can use the filter to only see those rooms.

Room Types

- Premium Ensuite
- Premium Room Access
- Premium Studio
- Standard Ensuite
- Standard Non Ensuite
- Studio
- Value Ensuite

Locations

- Bailey Point
- Chesil House
- Corfe House
- Cranborne House
- Dorchester House
- Home Park
- Lansdowne Point

Attributes

- Floor 1
- Floor 10
- Floor 11
- Floor 12
- Floor 13
- Floor 2
- Floor 3

Staying between 21/09/2019 and 11/07/2020 for Term: New Student starting Sept 2019 (40-42wk)

<p><b>Bailey Point Flat 003-7</b></p> <p>1  <a href="#">Calculate Total</a></p> <p><b>Bailey Point Floor 01, Flat 003, Bailey Point</b></p> <p>First Floor ensuite room in 7 bedroom flat with shared kitchen</p> <p><a href="#">Show Flat Occupants</a></p> <p><b>SELECT</b></p>	<p><b>Bailey Point Flat 009-7</b></p> <p>1  <a href="#">Calculate Total</a></p> <p><b>Bailey Point Floor 02, Flat 009, Bailey Point</b></p> <p>Second Floor ensuite room in 7 bedroom flat with shared kitchen</p> <p><a href="#">Show Flat Occupants</a></p> <p><b>SELECT</b></p>	<p><b>Bailey Point Flat 015-7</b></p> <p>1  <a href="#">Calculate Total</a></p> <p><b>Bailey Point Floor 03, Flat 015, Bailey Point</b></p> <p>Third Floor ensuite room in 7 bedroom flat with shared kitchen</p> <p><a href="#">Show Flat Occupants</a></p> <p><b>SELECT</b></p>
<p><b>Bailey Point Flat 021-7</b></p> <p>1  <a href="#">Calculate Total</a></p>	<p><b>Bailey Point Flat 027-7</b></p> <p>1  <a href="#">Calculate Total</a></p>	<p><b>Bailey Point Flat 033-7</b></p> <p>1  <a href="#">Calculate Total</a></p>

# Getting moved in

**Stage 1 – when BU is your firm choice**

Register your interest in accommodation

**Stage 2 – Reserve your room**

UF – pay and sign to secure your room

CF – wait for results before securing your room

**We've got this covered. Your rent includes...**

- ✓ **12-month unlimited BU bus pass\***
  - ✓ Covers all university travel
  - ✓ Includes some local buses too
- ✓ **Internet usage\*\***
- ✓ **Bills** (gas, electric, water, sewerage)

\*Providing unlimited travel on selected services. You can opt-out of this feature, reducing rental payment by £295 (2024 entry figure).

\*\*Additional services/premium packages are available in some halls.



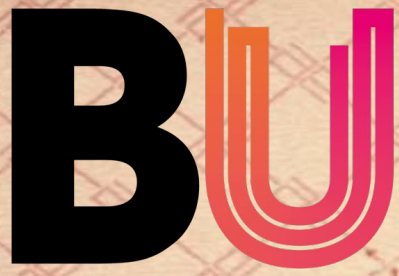
# Getting moved in

**So, you're moving away from home  
– maybe for the first time?**

- ✓ **Prepare**
- ✓ **Get things covered**
- ✓ **Space saver**

**Learn more on our website**  
[www.bournemouth.ac.uk/accommodation](http://www.bournemouth.ac.uk/accommodation)





**Bournemouth  
University**



# The best start.

Fees & funding for first year undergraduates

#BUOpenDay #BelongAtBU

**Please note:** The figures shown are for 2024 entry.

# What we'll talk about

## Fees & financial support

- Tuition Fee Loan
- Maintenance Loan
- NHS Learning Support Fund



## BU support: scholarships & bursaries

- BU Maintenance bursary up to £2,400 (up to £3,200 if studying Foundation Year)
- BU Care Leavers bursary up to £9,000 (up to £12,000 if studying Foundation Year)
- Sports Scholarship – up to £5,000
- Music Scholarship – worth up to £600



# STUDENT FINANCE EXPLAINED

2024 TO 2025

# The cost of study

**£9,250**  
per year, Honours  
degree courses

- **Tuition Fee Loan** to cover full amount
- Students do not start repayment until income is **over £25,000\*** a year, **£2,083** a month, **£480** a week
- Fees will not change for duration of course
- You can pay the university directly in a single lump sum or two instalments

**10%**

**Student family discount for each year of study**  
If an immediate family member studies at BU or is a graduate of BU.

# The cost of living: Maintenance Loan

Up to  
**£10,227**  
living away from home

- Maintenance Loans are for day-to-day costs – typically accommodation, travel, domestic bills etc. They are paid in three instalments (**one** each term).

✓ **45%**  
Non-income assessed

+ **Up to 55%**  
Income assessed

Up to  
**£8,610**  
living at home

This information is provided in good faith using the latest information available from Student Loans Company. The Maintenance Loan amounts shown are for 2024/25 entry and based on a 30-week course. A Long Courses Loan is available if your course is more than 30 weeks and 3 days. For the latest information, visit [www.gov.uk/student-finance](http://www.gov.uk/student-finance)

# The cost – if you take a placement year

Placement year  
tuition fee  
(2024 entry)

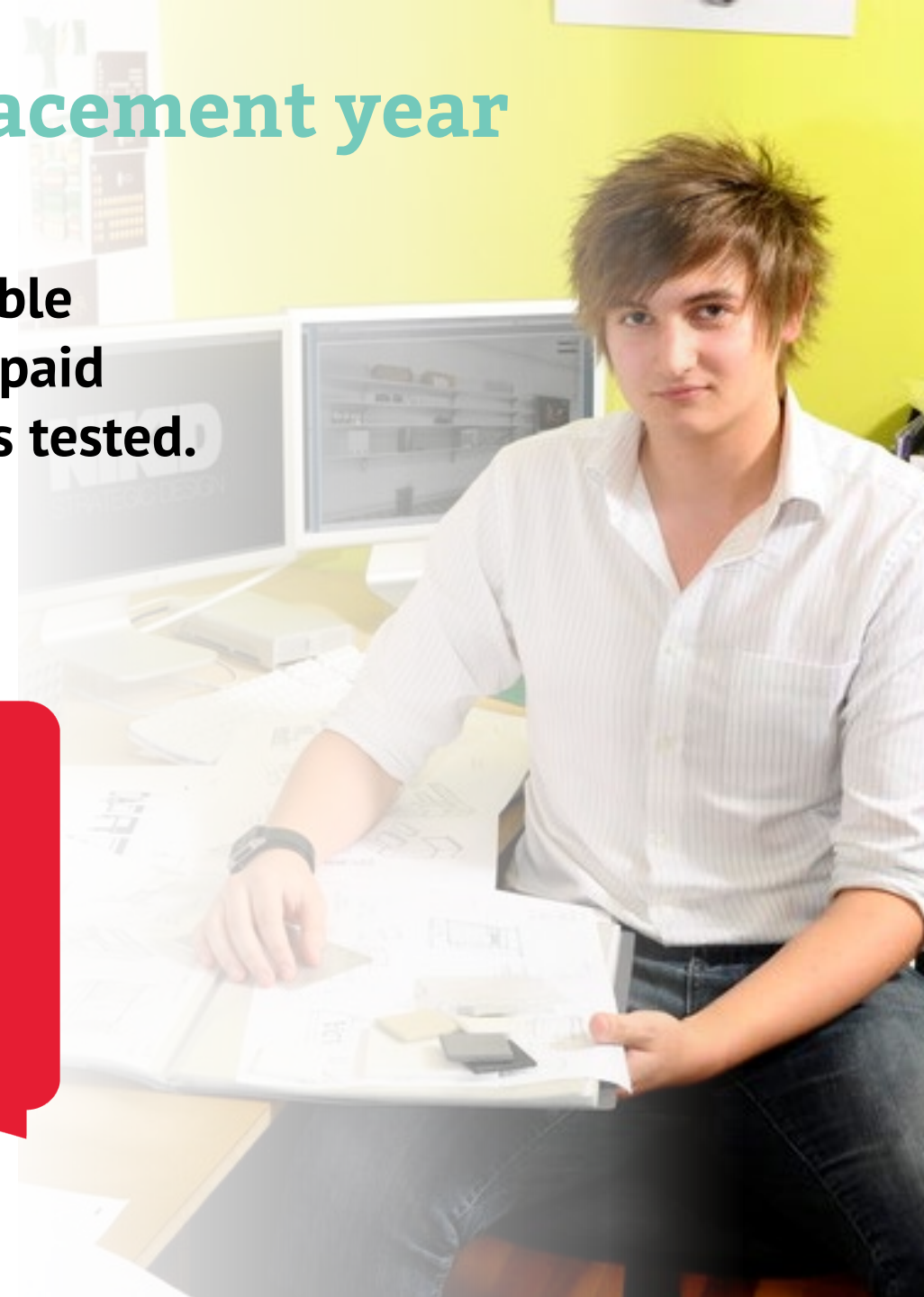
**£1,850**

**Maintenance Loans are available  
whilst you are on a paid or unpaid  
placement and are non-means tested.**

**£2,324**  
Living at home

**£3,098**  
Placement  
elsewhere in UK or  
abroad

**£4,350**  
Placement in  
London



# Paying it back

- You will start repaying your **combined loan amount automatically** (by HMRC) in the **April following graduation** or leaving the course, only **when you earn over the threshold**.
- If any amount remains after **40 years**, it is written off.

Interest accrues on the loan from the moment you take it out.

Likely to be

**RPI**

**9%**

Of your income above  
£25,000 (before tax)

for **40** years (max.)

Yearly income before tax	Income from which 9% will be deducted	Approximate monthly repayment
£25,000	£0	£0
£28,000	£3,000	£22
£29,500	£4,500	£33
£31,000	£6,000	£45
£33,000	£8,000	£60



# Additional support from the Government

- **Childcare grant:**
  - Up to £193.62 a week for 1 child
  - Up to £331.95 a week for 2 children or more
- **Parents' Learning Allowance:**
  - Up to £1,963 a year to support learning costs (doesn't affect benefits or tax credits)
- **Adult Dependants' Grant:**
  - Up to £3,438 a year
- **Child tax credit:**
  - Up to £3,235 a year for each child for the 2023 to 2024 tax year
- **Disabled Students' Allowances:**
  - Up to £26,948 a year for support. Help with day-to-day costs of studying that are related to your disability, specialist equipment, a non-medical helper allowance

Non-repayable  
additional  
support

Apply as part of your  
student finance  
application



**GOV.UK**

[www.gov.uk/student-finance](http://www.gov.uk/student-finance)

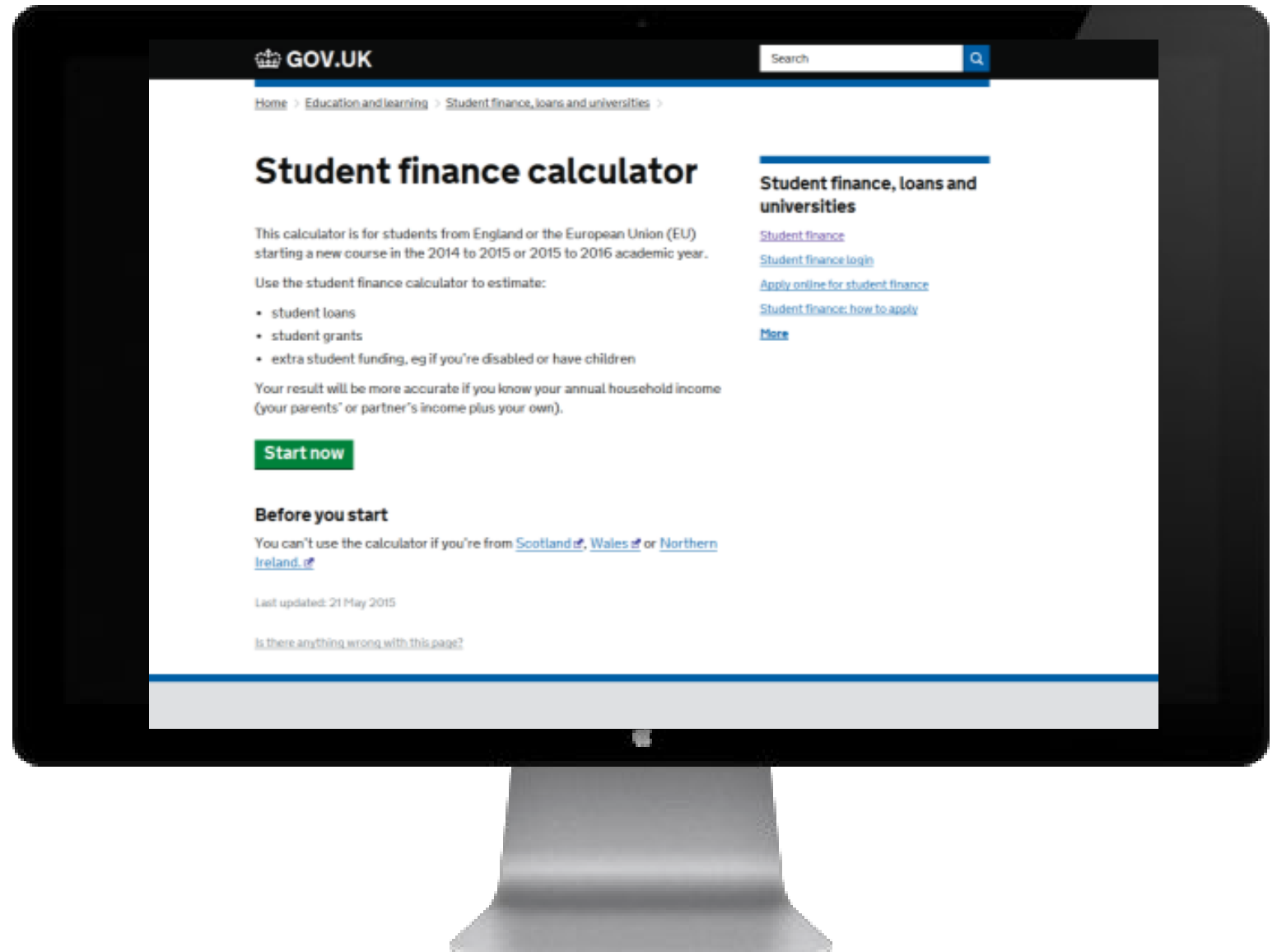
- **Student finance calculator**
- **Information & guidance**
- **Student finance application**

## What you'll need:

- ✓ Details of household income
- ✓ UK passport number (enter online) or other identity documents (may need to be sent)

**SAAS**  
Funding your future

student finance wales  
cyllid myfyrwyr cymru



# Bursaries & Scholarships from BU

- ✓ This support is **directly from BU** – it's additional to your student loan
- ✓ BU should be your **firm choice** to be considered for any of this funding
- ✓ They're **non-repayable**

**BU Maintenance  
Bursary**  
Up to **£2,400\***

Over 3 years of study  
(£800 each year)

For 'Home' fee status applicants  
living in England with a household  
income up to £16,000

**BU Care Leavers  
Bursary**  
Up to **£9,000\*\***

Over 3 years of study  
(£3,000 each year)

For 'Home' fee status applicants  
living in England who have been in  
care of the Local Authority for a  
period of 3 months or more, with a  
household income up to £16,000

\*Up to £3,200 for those studying  
a Foundation Year  
\*\*Up to £12,000 for those  
studying a Foundation Year

Terms, conditions & exclusions apply.  
See [www.bournemouth.ac.uk/bursaries](http://www.bournemouth.ac.uk/bursaries)



**BU Sport  
Scholarship**

**Up to £5,000**

Supporting elite athletes  
representing their sport at a  
national or junior level

Terms & conditions apply  
See [www.bournemouth.ac.uk/ug-scholarships](http://www.bournemouth.ac.uk/ug-scholarships)



**BU Music Scholarship  
Benefits package worth  
approximately £600**

**per year**

Supporting outstanding musicians and  
singers who raise the profile of BU's  
performance-based output





**Bournemouth  
University**

# Things to remember

## 2024 entry

- Check out your accommodation options
- Apply for student funding and explore Scholarships and Bursaries

## September

- Get ready to start uni!

## 2025 entry

### From March

Apply for your accommodation when your place is Unconditional Firm

## May

- Student funding applications must be submitted by end of May and explore Scholarships & Bursaries
- Make your university choice

## September

- Get ready to start uni!

## Contact

**BU: 01202 961916**

**futurestudents@bournemouth.ac.uk**

**Student Finance England: 0300 100 0607**

The university has consulted the latest available information in the production of this presentation for delivery in **June 2024** but cannot be held liable for its accuracy. You should take advice based on your personal circumstances before entering into any financial commitment. If you are joining us from Wales, Scotland or Northern Ireland, please see the relevant funding bodies for details of Maintenance support.

The latest information can be found at:

**[www.gov.uk/studentfinance](http://www.gov.uk/studentfinance) [www.bournemouth.ac.uk/ug-funding](http://www.bournemouth.ac.uk/ug-funding)**