

### Parents and supporters

Sign up to our newsletter and we'll send you information to help support your young person on their journey to starting university.



**In the event of an emergency or for first aid** please call 01202 962222 to summon emergency assistance on campus. In the event of a fire please make your way to the nearest fire exit or assembly point.



**Photography and filming**  
BU will be taking photos and filming at this event. If you do not wish to be included, please make yourself known to the photographer or film crew.

Alternative formats are available on request:  
[formats@bournemouth.ac.uk](mailto:formats@bournemouth.ac.uk)

### Contact us:

Tel: +44 (0)1202 961916

Email: [futurestudents@bournemouth.ac.uk](mailto:futurestudents@bournemouth.ac.uk)



#BUOpenDay

[www.bournemouth.ac.uk](http://www.bournemouth.ac.uk)

12323



Bournemouth  
University

# Undergraduate Open Day



Download  
our Open Day app



Saturday 12 October | Saturday 26 October |  
Saturday 16 November

Talbot Campus, BH12 5BB

Lansdowne Campus, Bournemouth Gateway  
Building, BH8 8GP

# Welcome to Bournemouth University

Our Open Days provide a great opportunity to discover how you can belong at BU. You'll learn more about your chosen course, find out about student life, accommodation, placements, career opportunities and funding your degree. Some of our course talks may also offer practical activities, and/or tours of our facilities. Academics, current students and staff will be on hand to answer any questions you may have.

## Getting to BU

### Arrival and check-in

Arrive from 10am to start your day. Check in using the button in the email we'll send you, or have our staff and Student Ambassadors scan your QR code to check you in and help you plan your day.

### Which campus?

We have two campuses, Talbot and Lansdowne, just ten minutes apart by bus or bike. Check the timetables (pages 6 and 12) for talk details and your arrival instructions email for travel information.

### Free shuttle bus (10 mins)

Free shuttle buses will run between our Talbot Campus, Lansdowne Campus and the Bournemouth Travel Interchange throughout the day.

### Accessibility

We're committed to ensuring you have the best experience at our Open Day. Blue badge spaces are available on a first-come, first-served basis.

For accessibility information for all our buildings, please visit [www.AccessAble.co.uk](http://www.AccessAble.co.uk). If we can assist in any way, please contact us in advance (see back cover for details).

## Planning your day

### Campus Tours (30 - 45 mins)

Come and join our Student Ambassadors for a guided tour of our campuses - no need to book.

#### Talbot Campus (ground floor, Student Centre, and ground floor, Poole House):

See our Library and Learning Centre, SportBU gym, study support and specialist facilities – and of course all the best places to eat and drink on campus. You will also visit our Student Village accommodation. There will be expert Student Ambassadors in SportBU.

#### Lansdowne Campus (first floor, Bournemouth Gateway Building):

You will see the Library and Learning Centre, skills labs and specialist facilities and take a look around the Lansdowne Campus for all the best places to take a break between studies.

### Course & Subject talks & tours

See the timetables to find course and subject talks. You can meet academic staff, find out about the course content and ask questions about studying at BU. Where you see a symbol (♿ ♯), there will be an opportunity to discover some of our amazing facilities or take part in an activity. See pages 8 and 14 for details and allow enough time after the course talk when planning your day.

## Visit our accommodation

There are three ways to see our accommodation today.

- **On Campus Tour:** The Student Village is part of the Talbot Campus tour
- **Take a shuttle bus:** The majority of our Halls of Residence are at our Lansdowne Campus, within walking distance of one another. See the map for bus stopping points. Last entry to Halls is at 3.30pm
- **Self-drive:** Follow our Lansdowne Campus postcode (BH8 8GP) and find local pay & display parking facilities. Last entry to Halls is at 3.30pm.

If you can't visit our accommodation today, you can visit our virtual tours for views of each accommodation at [www.bournemouth.ac.uk/accommodation](http://www.bournemouth.ac.uk/accommodation).

## Discover Bournemouth (45 mins)

Join a bus tour of the local area. Collect tickets from the Information Point in Poole House (Talbot Campus) or the ground floor of the Bournemouth Gateway Building (Lansdowne Campus). Buses depart from Talbot Campus at 11am, 1pm, and 2pm, and from Lansdowne Campus at 11.10am, 1.10pm, and 2.10pm.

## Additional Learning Support

Our Additional Learning Support team will be available throughout the day to discuss any learning support requirements you have and what BU can offer. Alternatively, you can contact the team directly:

Telephone: **+44 (0)1202 965663**  
Email: [als@bournemouth.ac.uk](mailto:als@bournemouth.ac.uk)

## Students' Union

As a BU student, you'll be part of the Students' Union Bournemouth University (SUBU). SUBU offers opportunities to enhance your skills, employability, and join various clubs and societies. Learn more at [www.subu.org.uk](http://www.subu.org.uk).

## Exhibition

The Exhibitions open from 10am. Visit us in the locations below to talk to academic and support teams from across BU.

### Talbot Campus

#### Fusion Building (ground floor):

- Admissions (11am - 3pm), Student support & services\*

#### Fusion Building (1st floor):

- Archaeology & Anthropology
- Computing & Informatics
- Life, Environmental & Forensic Sciences
- Medical & Biomedical Science

#### Dorset House (The Business School):

- Accounting, Finance & Economics
- Business & Management
- Marketing
- Tourism, Hospitality & Events

#### Poole Gateway Building:

- Computer Animation & Visual Effects
- Photography, Music, Media, Film & TV Production

#### Kimmeridge House:

- Psychology

#### Poole House:

- Design & Engineering
- Nutrition
- Sport

#### Weymouth House:

- History
- Journalism, English & Communication
- Law
- Marketing Communications

### Lansdowne Campus

#### Bournemouth Gateway Building

##### Ground floor:

Admissions, Student support & services\*

##### 1st & 2nd floors:

Courses & Academic exhibition

\*Student support & services includes: Accommodation, Funding, Additional Learning Support, Faith & Reflection, Careers & Placements, Sport, Wellbeing

# Talbot Campus map



## Amenities

- Shuttle buses and bus tours depart from the bus hub
- Open Day parking
- Blue Badge car parking
- Exhibition area
- Pedestrian access routes
- Toilets
- Disabled toilets
- Changing places facility
- Baby changing
- Food and drink
- Complimentary arrival refreshments
- First aid
- Information Point
- Campus Tours
- Defibrillator
- Fire Muster Point
- Water station

## Key

### Orange zone

- 1 Inspire Lecture Theatre
- 2 Share Lecture Theatre
- 3 Create Lecture Theatre
- 4 FG06, Seminar Room
- 5 Student Support teams

### Pink zone

- 6 Library & Learning Centre
- 7 Allsebrook Lecture Theatre

### SportBU and sports facilities tours

- 8 SportBU
- 9 Student Centre

### Blue zone

- 10 Main entrance
- 11 The Atrium café
- 12 Shelley Lecture Theatre
- 13 Bus Tour tickets

### Purple zone

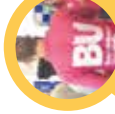
- 14 Lees Lecture Theatre
- 15 Lawrence Lecture Theatre
- 16 Stevenson Lecture Theatre
- 17 Cobham Lecture Theatre
- 18 Barnes Lecture Theatre
- 19 KG01 Lecture Theatre
- 20 KG03 Lecture Theatre
- 21 Marconi Lecture Theatre
- 22 K101 and K103 Seminar Rooms

### Exhibition areas

You can find details of our exhibition areas on Page 3. Follow the yellow 'E' markers to find these on campus.


If you


have any questions, please ask a member of staff or our Student Ambassadors (wearing pink).






# Talbot Campus timetable

 General talks from BU

 Course and subject talks

 Busy talk. Talk is repeated during the day

  Tour or activity takes place after the talk. See pages 8 and 9 for details

Tour or activity takes place after the talk. See pages 8 and 9 for details

Just so you know... If a talk is really busy, we may prioritise prospective students over guests.

	10am	10.15	10.30	10.45	11.00	11.15	11.30	11.45	12pm	12.15	12.30	12.45	1.00	1.15	1.30	1.45	2.00	2.15	2.30	2.45	3.00	3.15	3.30	
Fusion Building	Share Lecture Theatre			Accommodation and Finance					Media, Film & TV Production degrees					Welcome to SportBU	Sport Management & Sport Coaching				Psychology degrees					
	Inspire Lecture Theatre			Tourism & Hospitality degrees					Marketing Communications degrees						Music & Sound Production					Accommodation and Finance				
	FG06								Ecology & Wildlife Conservation & Biological Sciences									Employability, Global Experiences and Placements						
Library	Allsebrook Lecture Theatre						Communication & Media				Design degrees				Multimedia Journalism				Multimedia Sports Journalism					
	Marconi Lecture Theatre			Vice-Chancellor's Welcome to BU				Computer Animation & Visual Effects					Accounting & Finance degrees							Media, Film & TV Production degrees				
	KG01 Lecture Theatre	Vice-Chancellor's Welcome to BU		Psychology degrees					Accommodation and Finance				Law degrees				Business & Management							
Kimmeridge House	KG03 Lecture Theatre			Engineering degrees			History				Archaeology & Anthropology degrees						Student life at BU							
	K101			Welcome to SportBU			Economics				English						UCAS Application process							
	Barnes Lecture Theatre			Games & E-Sports degrees				Photography			Events Management					Biomedical Science & Medical Science				Forensic Investigation, Forensic Science & Forensic Biology				
Poole House Lecture Theatres	Cobham Lecture Theatre			Computing & Informatics degrees				Vice-Chancellor's Welcome to BU			UCAS Application process				Computing & Informatics degrees				Computer Animation & Visual Effects					
	Lawrence Lecture Theatre						Student life at BU		Disability and Accessibility at BU				Nutrition				Geography and Environmental Science							
	Lees Lecture Theatre			Forensic Investigation, Forensic Science & Forensic Biology				Business & Management						Marketing			Sport & Exercise Science							

## Can't find your course?

See below for courses represented in our subject talks.

**Accounting & Finance degrees:** Accounting, Finance, Accounting & Finance

**Archaeology & Anthropology degrees:** Archaeology, Anthropology, Archaeology & Anthropology, Archaeological, Anthropological & Forensic Sciences

**Computing & Informatics degrees:** Business Computing

with Analytics, Computing, Computer Science, Cyber Security Management, Cyber Security with Digital Forensics, Data Science & Artificial Intelligence, Networks & Cyber Security and Software Engineering

**Games & E-Sports degrees:** Games Design, Games Programming and E-Sports Digital Technologies

**Design degrees:** Product Design and Design Engineering

**Engineering degrees:** Design Engineering, Mechanical Engineering, Mechatronics & Robotics

**Law degrees:** Law, Law with Legal Practice (SQE) and Law, Media & Creative Industries

**Marketing Communications degrees:** Marketing Communications for Social Change, Marketing Communications with Advertising, Marketing Communications with Digital Strategy, Marketing Communications with Public Relations

**Media, Film & TV Production degrees:** Media Production, Film, and Film & TV Production

**Psychology degrees:** Psychology, Psychology with Counselling, Psychology with Forensic Investigation and Psychology in Education  
**Tourism & Hospitality degrees:** Tourism Management, International Tourism & Hospitality Management, International Tourism & Business Management, International Hospitality & Business Management.

# Talbot Campus facility tours and academic exhibition

## Tours and activities

🕒 Drop-in times below

### Business School tour

Dorset House, 11am - 2pm (10 mins)

If you're interested in Business & Management, Marketing, Accounting, Finance, Economics, Tourism & Hospitality, Events Management, Sport Management or Sport Coaching, join our Student Ambassadors in Dorset House for a guided tour of the facilities dedicated to Business School students.

### Creative facilities tour

Poole Gateway Building, 11am - 3pm (45 mins)

If you're interested in Music & Sound Production, Computer Animation & Visual Effects, Media Production, Film, or TV Production, join our Student Ambassadors and faculty staff in the Poole Gateway Building for a guided tour of the facilities.

### Psychology degrees drop in

Kimmeridge House (K103), 11.45am - 2.30pm

Come and meet Psychology staff and current students to learn more about what it's like to study with us and join us for a tour of our facilities.

### Games & E-Sports degrees

Poole Gateway Building (3rd floor) - 11:30am - 3pm

Come and meet academic staff to see the facilities and get an insight into the software you'll be using.

## Activities & Tours that follow talks

🕒 Please allow additional time after talk:

### Archaeology & Anthropology degrees

40 mins

Explore our broad range of field excavation and survey equipment, our purpose-designed human and animal laboratories, analytical facilities and our extensive collections of archaeological material.

### Biomedical Science and Medical Science degrees

45 mins

Learn about our modern lab and technical resources (such as our analytical and biomolecular facilities).

### Computing degrees

45 mins

Visit our cyber and networking labs to find out more about computing & informatics at BU.

### Design and Engineering degrees

45 mins

Following our Design and Engineering degree talks you will visit our Innovation Centre, which is home to our workshops, including rapid prototyping, stress testing, 3D printing and electronics labs amongst others.

### Ecology & Wildlife Conservation and Biological Sciences degrees

45 mins

Learn about the superb fieldwork opportunities, as well as our modern lab and technical resources (such as our analytical, biomolecular and fruit fly facilities).

### Forensics degrees

45 mins

Visit our analytical, forensic and toxicology labs, as well as our purpose-built crime scene training facility and our human remains lab.

### Games & E-Sports degrees

30 mins

Visit our games and brand new E-Sports facilities and find out about the software we use.

### Geography and Environmental Science degrees

45 mins

Discover our range of field equipment, analytical instruments, and laboratories.

### Hospitality degrees

30 mins

Explore our Food Management Studio. Designed for all food industry-related activities, such as product testing, food innovation launches, psychology, and specific sensory and ability awareness training.

### Photography

20 mins

Explore our photography facilities and participate in a Q&A session following the course talk.

### Sport Coaching

15 mins

Visit our human performance laboratories, fitted with a range of equipment, such as ergometer bikes, rowing machines and squat racks.





# Lansdowne Campus timetable

General talks from BU

Course talks

Busy talk. Talk is repeated during the day

Facility tours follow the talk. See page 14 for details

Just so you know... If a talk is really busy, we may prioritise prospective students over guests

	10am	10.15	10.30	10.45	11.00	11.15	11.30	11.45	12pm	12.15	12.30	12.45	1.00	1.15	1.30	1.45	2.00	2.15	2.30	2.45	3pm	
Bournemouth Gateway Building, ground floor	Student Services and Admissions Exhibition open throughout the day from 10am - 3pm approximately.																					
Bournemouth Gateway Building, first and second floors	Campus Tours (first floor) and Academic Exhibition open throughout the day 10am - 3pm approximately.																					
BG-108 (1st floor)					Student life at BU				Operating Department Practice				UCAS Application process									
The Wolfson Lecture Theatre (1st Floor)		Welcome to BU			Paramedic Science				Criminology, Sociology and Social Anthropology degrees*				Paramedic Science						Criminology, Sociology and Social Anthropology degrees*			
BG-113 (1st floor)									Registered Nursing Degree Apprenticeships													
BG-212 (2nd floor)									Mental Health Nursing				Social Work									
BG-217 (2nd floor)					UCAS Application process				Children's & Young Peoples Nursing				Children's & Young Peoples Nursing									
BG-302 (3rd floor)					Adult Nursing				Occupational Therapy				Adult Nursing						Finance and Accommodation			
BG-402 (4th floor)					Midwifery													Midwifery				
EB206, Executive Business Centre					Sports Therapy				Finance and Accommodation										Sports Therapy			
EB306, Executive Business Centre					Physiotherapy				Physiotherapy													

## Discover your new home from home

Take a **bus tour** today and see beautiful Bournemouth. Our Student Ambassadors will highlight points of interest, including the seafront and town centre.





# Lansdowne Campus facility tours and activities

Don't miss the opportunity to explore our subject facilities during your visit. Some areas are open for you to see throughout the day, while others are available on a guided tour or a practical activity taking place following one of our talks. Take a look below to discover what you'll find at our Open Day – don't forget to allow yourself time for the tour/activity when planning your day.

## Tours and activities

🕒 Drop-in times below

### Campus Tours

10am - 3pm

Visit some of our skills labs as part of a Campus Tour, which depart from the first floor of Bournemouth Gateway Building. See practical learning facilities come to life: ambulance simulation suite, birthing suite, hospital wards, operating theatre, community settings with a mock-up kitchen and living area, plinth room and other skills labs.

### Nursing

30 mins

Take part in a guided session in BG-208. This activity repeats throughout the day at 11am, 12pm, 1pm and 2pm.

### Midwifery

30 mins

Take part in a guided session in BG-203 running at 12.00 - 13.00 and 14.30 - 15.30.

## Activities and tours that follow talks

🕒 Allow extra time after the talk

### Operating Department Practice

30 mins

Have a go at scrubbing up and get involved with tasks using surgical instruments. The activity will take place in BG-G27 after the course talk finishes at 12.45pm.

### Sports Therapy

Visit our rehabilitation suite in EB106 (Executive Business Centre) after the course talk finishes at 11.45am and 2.45pm.

### Physiotherapy

30 mins

Take part in a guided discovery session in our rehabilitation suite, EB106 (Executive Business Centre), after the second course talk finishes at 12.45pm.

### Occupational Therapy

45 mins

Take part in a guided discovery session in BG-107, after the course talk finishes.

Activities are subject to change on the day, visit Information Points for more information.

